

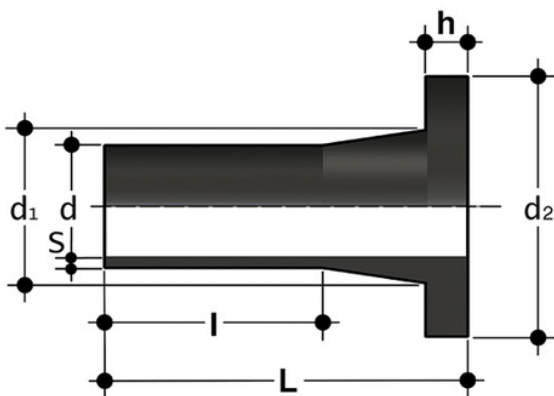
PE 11.94.511

Bend 90°, PE 100, SDR 11, short

- molded
- for heating element butt welding and IR welding
- GKE with 8 45° auxiliary markings for precise installation
- Continuous wall thickness
- R approx. 1 x de

Series of short and long fittings designed for conveying fluids under pressure for butt welding and electrofusion applications.

- Size range: d 12 ÷ d 800 (mm)
- Nominal pressure: SDR 17 (PN10) with water at 20 °C, SDR 11 (PN16) with water at 20 °C
- Temperature range: -40 °C ÷ 60 °C
- Coupling standards - Reference standards:
 - Welding: EN ISO 15494. Can be coupled to pipes according to EN ISO 15494
 - Flanging system: ISO 7005-1, EN 1092-1, EN ISO 15494, ANSI B16.5 cl.150
 - Construction criteria: UNI EN ISO 15494
 - Test methods and requirements: UNI EN ISO 15494
 - Installation criteria: DVS 2202-1, DVS 2207-1, UNI EN 12201- 3, UNI 10520, ISO 21307,UNI 10521, UNI EN 1555-3, ISO 4427- 3, ISO 4437-3
- Fitting material: PE-HD
- Seal material: EPDM, FKM



Reference	d	h	l	d ₁	d ₂	L	S	g
QDE11020	*20	7	62	27	45	85	1,9	21
QDE11025	*25	9	62	33	58	90	2,3	39
QDE11032	*32	10	62	40	68	86	2,9	56
QDE11040	*40	11	62	50	78	89	3,7	87
QDE11050	*50	12	62	60	88	90	4,6	132

All information subject to change.

Please contact us on <https://www.aliasis.co.uk/get-in-touch> for further informations

PE 11.94.511

Bend 90°, PE 100, SDR 11, short

Reference	d	h	l	d ₁	d ₂	L	S	g
QDE11063	*63	14	70	75	102	106	5,8	202
QDE11075	*75	16	90	89	122	125	6,8	315
QDE11090	*90	17	100	105	138	140	8,2	470
QDE11110	*110	18	113	125	158	160	10,0	715
QDE11125	*125	25	116	132	158	170	11,4	902
QDE11140	*140	25	128	155	188	182	12,7	1280
QDE11160	*160	25	155	175	212	208	14,6	1835
QDE11180	*180	30	168	182	212	202	16,4	1960
QDE11200	*200	32	140	232	268	206	18,2	3130
QDE11225	*225	32	135	235	268	201	20,5	3260
QDE11250	*250	35	138	285	320	219	22,7	5180
QDE11280	*280	35	152	291	320	231	25,4	5590
QDE11315	*315	35	158	335	370	239	28,6	7575
QDE11355	*355	40	176	373	430	260	32,2	10740
QDE11400	*400	46	195	427	482	290	36,3	15335
QDE11450	*450	60	210	516	585	335	40,9	25690
QDE11500	*500	60	230	532	585	350	45,4	28200
QDE11560	*560	60	240	616	685	370	50,8	39260
QDE11630	*630	60	260	643	685	390	57,2	44260
QDE11710	*710	67	280	737	800	380	64,5	72000