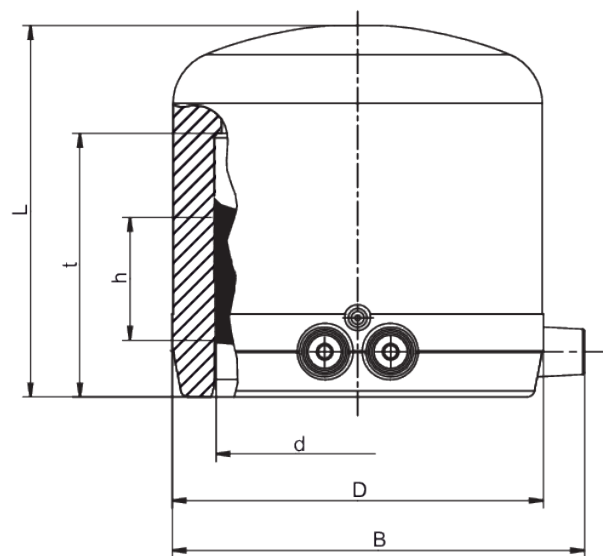


MV SDR 11

End cap, SDR 11

End cap MV SDR 11

- Gas, water and H₂
- Working pressure: MOP (gas) 10 bar, PFA (water) 16 bar
- Material: PE 100-RC
- Safety technology
- DVGW test mark: DV-8601AU2248 and DV-8606AU2249
- FM Approvals Class: 1613 (d 63 - d 225)



PE 100-RC SDR 11

Maximum permissible working pressure 16 bar (water) / 10 bar (gas)



Reference	Diameter	SDR range	B	D	h	L	t	Weight [kg]	BX	Pallet quantity
612025	20	11	46	31	22	62	41	0,040	50	2500
612026	25	11	51	35	22	65	41	0,040	50	2500
612027	32	11	61	44	24	70	44	0,060	60	1920
612028	40	11	70	55	28	75	49	0,090	50	1600
612029	50	11 - 17,6	80	67	30	80	55	0,120	30	960
612030	63	11 - 17,6	96	84	31	88	63	0,210	20	640
612031	75	11 - 17,6	110	99	31	99	70	0,320	80	640
612032	90	11 - 17,6	130	118	40	114	79	0,530	16	288
612033	110	11 - 17,6	153	143	34	125	82	0,850	30	216
612034	125	11 - 17,6	168	163	42	135	87	1,180	21	144
612035	160	11 - 17,6	210	208	54	160	98	2,370	10	60
616183	180	11 - 17,6	225,5	224	46,5	157	100	2,800	6	48
616184	200	11 - 17,6	253	250,6	48	167	103	3,700	4	32

MV SDR 11

End cap, SDR 11

Reference	Diameter	SDR range	B	D	h	L	t	Weight [kg]	BX	Pallet quantity
616185	225	11 - 17,6	281,6	279	48	184	114	3,950	4	32

MV SDR 11

End cap, SDR 11

Areas of Application

The FRIALEN End caps MV are used to close HD-PE pipe ends.

Also recommended as fused caps (d32 and d40) for the dome of FRIALEN-Pressure Tapping Tees DAA and DAP up to d63.

FRIALEN safety fittings can be fused with SDR11 – SDR17.6 pipes. Other levels of SDR can be processed on request. Please note the mandatory labels directly on the product. DVGW test marks issued: DV-8601AU2248 and DV-8606AU2249

Assembly Instructions

The fusion of a pipe end or the dome of a FRIALEN-Pressure Tapping Tee with the FRIALEN-End Cap MV takes place using FRIALEN-fusing – leakproof and longitudinally strong.

The fusion area is prepared according to the general installation instructions (see "Assembly Instructions" for "FRIALEN-Safety Fittings for house connections and distribution pipes up to d 225"). This involves removing the oxide skin and cleaning the pipe ends. Next to moulded fittings and accessories it is recommended to install a piece of pipe of 20 – 60 cm length, accordingly to the diameter, so that the pipeline can be continued later on.

Good reasons for using the FRIALEN End caps MV:

- Large coupler depth for ease of pipe guiding (no holding clamps required)
- Extra wide fusion zones
- Maximum stability through great wall thickness
- Cold zones at the front side and in the middle of the coupler
- Exposed heating coil for direct heat transmission to the pipe
- Small annular gap for build-up of optimum joining pressure in the fusion zone
- Touch proof electric contacts
- Fusion indicator for visual fusion control
- Durable batch marking
- Individually wrapped for dirt protection
- Additional barcode for tracing back the fitting (Traceability-Coding)