

USTN

Transition fitting HD-PE/steel with male thread

Transition fitting, steel pipe USTN

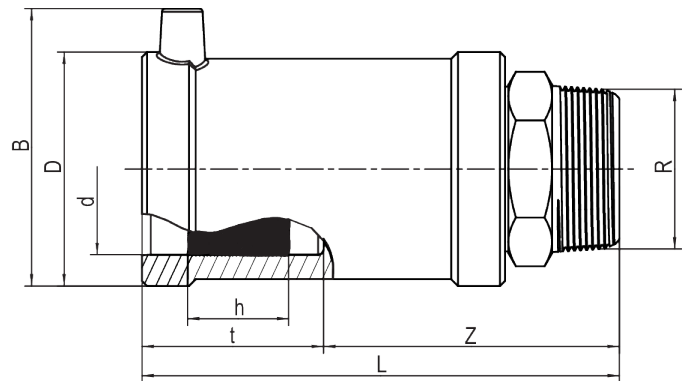
- Gas and H₂
- Working pressure: MOP (gas) 5 bar
- Material: PE 100-RC and steel [EN 10278; EN 10277-3 - 11SMn30+C -, thread to EN 10226-1]
- Safety technology

Note:

Anchored the steel side non-detachable and non-rotatable in the PE.

Self-sealing, patented sealing geometry without elastomeric gasket for use in gas applications.

Other thread dimensions available on request.



PE 100-RC SDR 11

Maximum permissible working pressure 5 bar (gas)



Reference	Diameter	R	B	D	h	L	t	z	Weight [kg]	BX	Pallet quantity
612580	32	1"	61	47	24	119	42	77	0,350	20	1080
612582	40	1 1/4"	70	58	30	131	46	86	0,530	20	800
612584	50	1 1/2"	80	70	30	146	53	93	0,700	15	600
612586	63	2"	94	84	35	152	53	99	1,040	10	400

USTN

Transition fitting HD-PE/steel with male thread

Areas of Application

The FRIALEN-Transition Fittings USTN are threaded joints as an adaptor from a metal pipe with threaded socket to a HD-PE pipe. Joint on the part of HD-PE by FRIALEN-Coupler.

Other thread dimensions on request

FRIALEN safety fittings can be fused with SDR11 – SDR17,6 pipes, minimum wall thickness $s_{\text{minimum}} \geq 3$ mm. Other levels of SDR can be processed on request. Please note the mandatory labels directly on the product. DVGW test mark issued: DV-7501AU2256.

Assembly Instructions

The threaded component must be held with a spanner to prevent it twisting in the HD-PE component. The fusion of the HD-PE side takes place by FRIALEN-fusing – leakproof and longitudinally strong. The installation of the steel and the HD-PE side has to be prepared according to the general installation instructions (see "Transition Fittings with threaded connection" in "Assembly Instructions" for "FRIALEN-Safety Fittings for house connections and distribution pipes up to d 225"). This involves removing the oxide skin and cleaning the pipe ends.

Good reasons for using the FRIALEN USTN:

- Compact construction
- HD-PE side with exposed heating element for optimal heat transfer
- Cold zones at the end to prevent the flow of molten material
- No holding clamps required
- Large insertion depth, extra wide fusion zones
- Steel end permanently anchored in the HD-PE and will not distort
- Self sealing patented sealing geometry without elastomer seal
- Additional barcode for tracing back the fitting (Traceability-Coding)