

MUN

Transition fitting HD-PE/brass with male thread

Brass pipe transition fitting MUN

- Water
- Working pressure: PFA (water) 16 bar
- Material: PE 100-RC and brass (EN 12168 - CW617N, thread according to EN 10226-1)
- Safety technology

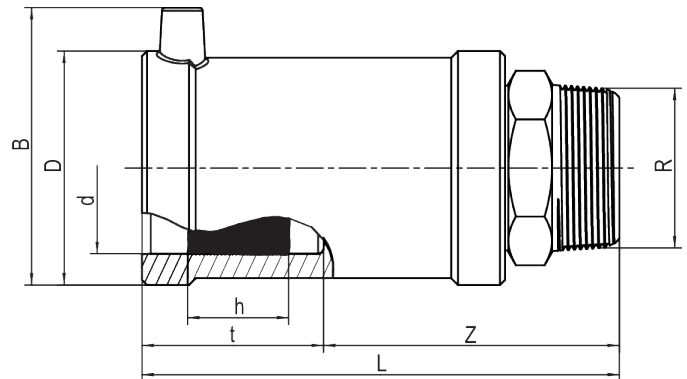
Note:

The brass side is anchored as non-detachable and non-rotatable in PE.

Self-sealing, patented sealing geometry without elastomeric seal for utilisation in water areas.

Default: Brass, gunmetal on request.

Other thread dimensions available on request.



PE 100-RC SDR 11

Maximum permissible working pressure 16 bar (water)



Reference	Diameter	R	B	D	h	L	t	z	Weight [kg]	BX	Pallet quantity
612712	32	1"	61	47	24	112	42	70	0,320	20	1440
612709	32	1 1/4"	61	47	24	120	42	70	0,400	20	1080
612698	32	1 1/2"	61	47	24	121	42	70	0,450	15	810
612721	40	1"	70	58	30	123	46	75	0,460	20	800
612713	40	1 1/4"	70	58	30	126	46	77	0,490	20	800
612718	40	1 1/2"	70	58	30	127	46	78	0,520	20	800
612725	40	2"	70	58	30	132	46	86	0,680	20	600
612719	50	1"	80	70	30	134	53	81	0,620	15	600
612716	50	1 1/4"	80	70	30	136	53	83	0,620	15	600
612714	50	1 1/2"	80	70	30	137	53	84	0,620	15	600
612706	50	2"	80	70	30	147	53	94	0,760	15	600
612722	63	1 1/4"	94	84	35	138	53	84	0,920	10	400
612717	63	1 1/2"	94	84	35	137	53	84	0,910	10	400

MUN**Transition fitting HD-PE/brass with male thread**

Reference	Diameter	R	B	D	h	L	t	z	Weight [kg]	BX	Pallet quantity
612715	63	2"	94	84	35	142	53	89	0,920	10	400

MUN

Transition fitting HD-PE/brass with male thread

Areas of Application

FRIALEN-Transition Fittings MUN are threaded joints as an adaptor from a metal pipe with internal thread to a HD-PE pipe. Joint on the part of HD-PE by FRIALEN-Coupler.

Other thread dimensions on request

FRIALEN safety fittings can be fused with SDR11 - SDR17,6 pipes, minimum wall thickness $s_{\text{minimum}} \geq 3$ mm. Other levels of SDR can be processed on request. Please note the mandatory labels directly on the product. DVGW test marks issued: DV-7501AU2256 and DV-7501AU2257.

Assembly Instructions

The threaded component must be held with a spanner to prevent it twisting in the HD-PE component. The fusion of the HD-PE side takes place by FRIALEN-fusing – leakproof and longitudinally strong.

The installation of the brass and the HD-PE side has to be prepared according to the general installation instructions (see "Transition Fittings with threaded connection" in "Assembly Instructions" for "FRIALEN-Safety Fittings for house connections and distribution pipes up to d 225"). This involves removing the oxide skin and cleaning the pipe ends.

Good reasons for using the FRIALEN-Transition Fittings MUN:

- Compact construction
- HD-PE side with exposed heating element for optimal heat transfer
- Cold zones at the end to prevent the flow of molten material
- No holding clamps required
- Large insertion depth, extra wide fusion zones
- Brass end permanently anchored in the HD-PE and will not distort
- Self sealing patented sealing geometry without elastomer seal
- Additional barcode for tracing back the fitting (Traceability-Coding)