

UAM ET

Transition fitting HD-PE spigot/brass with female threaded swivel nut

Universal transition adaptor brass pipe UAM ET

- Water
- Working pressure: PFA (water) 16 bar
- Material: PE 100 and brass [CW617N or CW612N, ISO 228 thread]

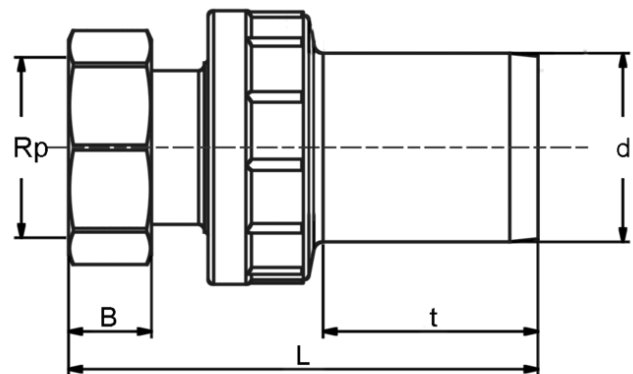
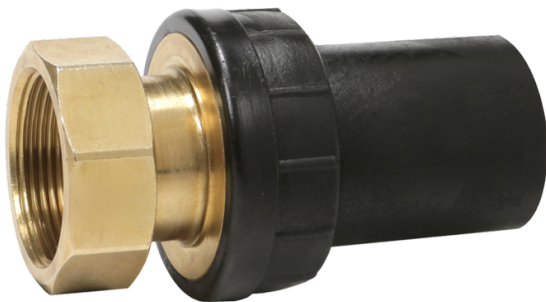
Note:

The brass side is anchored non-detachable and non-rotatable in the PE.

With freely rotatable union nut for easy and fast assembly.

For use in water areas.

Other thread dimensions available on request.



PE 100 SDR 11

Maximum permissible working pressure 16 bar (water)



Reference	Diameter	Rp	B	L	t	SW	Weight [kg]	BX	Pallet quantity
616655	32	1"	15	120	47	36	0,240	30	1080
616627	50	1 1/2"	22	150	57	58	0,640	16	576

Transition fitting HD-PE spigot/brass with female threaded swivel nut

Areas of Application

The FRIALEN Universal Adapter UAM ET with travelling nut serves to connect metal construction parts which have a screwed connection e.g. valves with an HD-PE connection pipe. The travelling nut admits the replacement of exchangeable components, like water meter. Suitable for water supply or for industrial applications. The version with PE spigot end allows for assembly regardless of location and the homogenous fusion connection with all suitable FRIALEN fittings (exception of FRIALONG-Long couplers).

The threaded joint is according ISO 228.

Please note the mandatory labels directly on the product.

The brass female thread is made of the material CW612N or CW617N.

Other brass materials available on request.

Assembly Instructions

Usually the screw connection needs to be assembled first as assembly related torsion forces should not bear down on the connected PE pipe. The tightening forces must be introduced via the specially designed wrench area on the travelling nut.

The fusion of the PE spigot end with a FRIALEN coupler takes place by using FRIALEN fusion process – leakproof and longitudinally strong.

The installation is according to the general installation instruction (see "Transition Fittings with threaded connection" in "Assembly Instructions" for "FRIALEN-Safety Fittings for house connections and distribution pipes up to d 225"). This involves removing the oxide layer and cleaning the pipe ends.

Good reasons for using the FRIALEN-Universal Adapter UAM ET:

- PE 100 spigot end – quality controlled
- Tested and quality controlled brass quality
- Assembly regardless of location, high degree of flexibility due to separate fusion of PE spigot end
- May be used with all FRIALEN fittings of identical dimensions (exception of FRIALONG-Long couplers)
- Universal combination option with the FRIALEN range
- HD-PE side with spigot end for processing without holding device, designed for FRIALEN couplers
- Pull-proof connection
- Brass side tightly connected with PE spigot end, safe from distortion
- Travelling nut for a comfortable installation to the brass external thread
- Replacement of screw thread-components without further adaptations
- Compact construction
- Additional barcode for tracing back the fitting (Traceability-Coding).
- Oxidic layer may be removed from PE spigot end using scraper tools