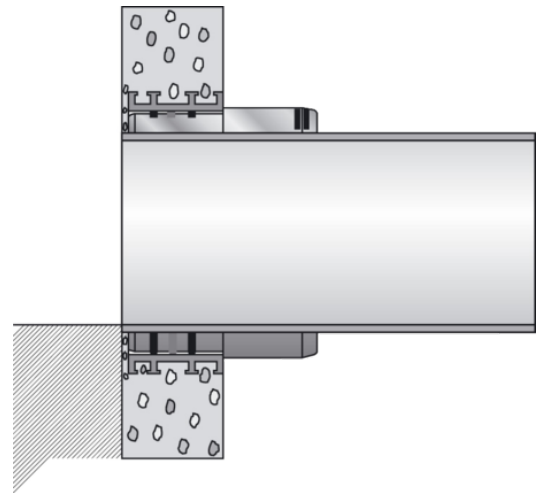
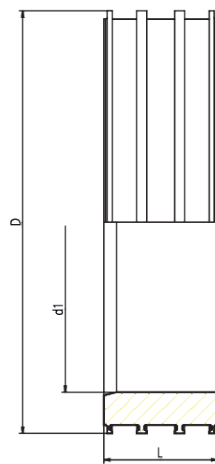


ASF

Shaft lining adapter for prefabricated concrete sewage inspection chambers

Shaft lining adapter for prefabricated concrete sewage inspection chambers ASF

- Connecting element between concrete prefabricated manhole and sewage insert sleeve AEM
- Reversed anchoring webs (T-section) on the entire circumferential width always ensure a firm and tight fit in the concrete
- Defined internal surface and fitting ratio for reliable system seal with AEM
- Stable internal diameter due to large wall thickness
- Flush closure (inside and outside) in the concrete shaft sub-section according to DIN 4034



PE 100

Maximum permissible test pressure 0.5 bar according to DIN EN 1610

Reference	d ₁	Pipe Diameter	product.detail.attribute.Rohrdurchmesser	D	L	Weight [kg]	BX	Pallet quantity
680401	134	110	110	200	135	1,690	12	96
680402	190	160	160	250	135	1,930	8	64
680403	218	180	180	280	135	2,250	6	48
680404	250	200	200	315	135	2,720	4	32
680405	280	225 / 250	225 / 250	355	135	3,690	4	32
680407	316	280	280	400	135	4,810	4	32
680408	357	315	315	450	135	6,160	1	18
680409	402	355	355	500	135	7,350	1	18
680410	452	400	400	560	135	9,280	1	12
680411	502	450	450	630	135	12,660	3	6
680414	562	500	500	670	135	11,300	3	6
680412	628	560	560	710	135	8,760	3	6
680413	713	630	630	800	135	10,700	3	6

ASF

Shaft lining adapter for prefabricated concrete sewage inspection chambers

Sewage pipe systems are high-value assets of a value which has to be maintained for a long time. Increasing demands on the public sewage system require materials which meet these criteria. HDPE sewage pipes have been fused for many years with the FRIAFIT HDPE sewage system tightly, frictionlocked and root-proof.

Areas of Application

The FRIAFIT-Sewage Inspection Chamber Adapter ASF is the joining element between concrete inspection chamber according to DIN 4034 and the FRIAFIT-Sewage Insert Sleeve AEM.

Assembly Instructions

The ASF is usually fitted in at the concrete works during manufacture of the inspection chambers. Application of the ASF is possible even on local concrete inspection chambers.

The ASF Sewage Inspection Chamber Adapter is installed according to the general installation requirements (see also "Fitting Instructions" of the FRIAFIT-Sewage System).

Good reasons for using the FRIAFIT-Sewage Inspection Chamber Adapter ASF

- The ASF is a corrosion resistant HDPE construction part
- Stable internal diameter due to big wall thickness
- Anchoring ribs twisted at the rear across the entire width ensure proper and leakfree anchoring in the concrete
- Width of component and connection HDPE/concrete correspond to DIN 4034
- Defined internal area for the reliable system sealing (AEM)
- For subsequent installation in bricks chambers a longer version **ASFL** (L = 250 mm) was developed