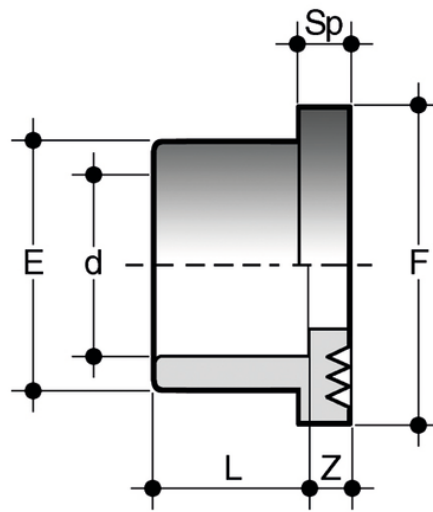
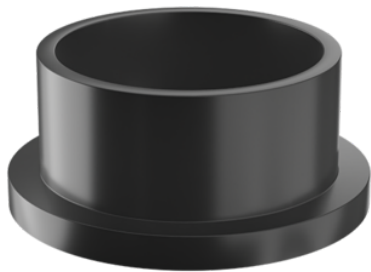


QLV

Fittings according to British standard - stubs.

Serrated face stub with solvent weld socket, for use with stubs QLV and flat gaskets QHV/X and QHV/Y (QHV/Y only when coupling to ISO/DIN "ODV and ODB" flanges).

Series of fittings for pipes conveying fluids under pressure with solvent weld and threaded joints according to British Standard.



Reference	d	PN	Class	E	F	L	Sp	Z	g
QLV200	2"	15	E	76	90	38	9	3	110
QPV075	2"1/2	15	E	90	106	44	10	3	165
QLV300	3"	15	E	108	125	51	11	5	270
QLV400	4"	15	E	131	158	61	12	5	445
QLV600	6"	12	D	188	216	86	16	5	1250
QLV800	8"	12	D	250	270	115	20	6,5	2150