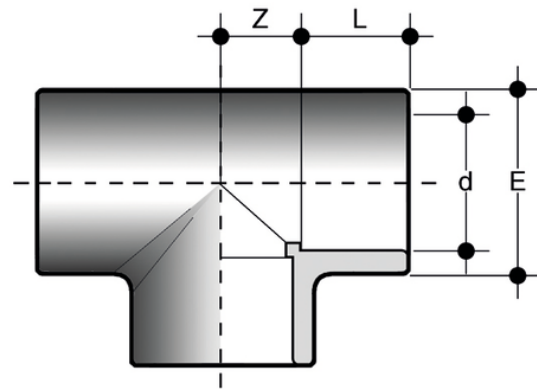
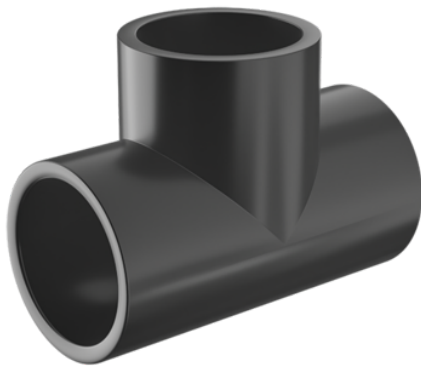


# TLV

Fittings according to British standard - equal socket.

90° Tee with solvent weld sockets.



Reference	d	PN	Class	E	L	Z	g
TLV012	1/2"	15	E	27	16,5	10,5	26
TLV600	6"	12	D	194,5	90	90	4400
TLV400	4"	15	E	131	63	59	1260
TLV300	3"	15	E	108	51	48	970
TIV075	2"1/2	15	E	90	44	40,5	560
TLV200	2"	15	E	76	38	33,5	495
TLV112	1"1/2	15	E	61	31	27	257
TLV114	1"1/4	12	D	50	26	22	90
TLV100	1"	15	E	41	22,5	17	55
TLV034	3/4"	15	E	33	19,5	13,5	30
TLV800	8"	12	D	257	115,5	116	10500

All information subject to change.

Please contact us on <https://www.aliaxis.co.uk/get-in-touch> for further informations