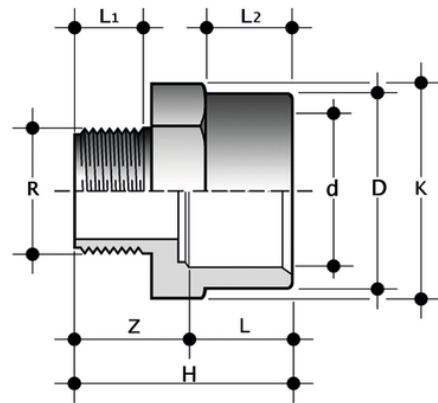
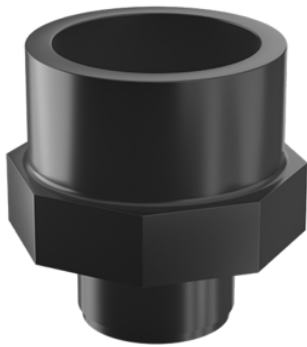


# ILFV

Fittings according to british standard - BS-BSP adaptors.

Female/male adaptor with solvent weld socket d and BSP threaded male end R.

Series of fittings for pipes conveying fluids under pressure with solvent weld and threaded joints according to British Standard.



Reference	d x R	PN	H	K	L	L <sub>1</sub>	Z	g	Class
ILFV012	1/2" x 1/2"	15	37,5	30	16,5	15	21	20	E
ILFV034	3/4" x 3/4"	15	42	36	19,5	16,3	22,5	22	E
ILFV100	1" x 1"	15	47,5	46	22,5	19,1	25	25	E
ILFV112	1"1/2 x 1"1/2	15	62	65	31	21,4	31	98	E
ILFV114	1"1/4 x 1"1/4	15	56,5	55	27	21,4	29,5	65	E
ILFV200	2" x 2"	15	73	80	38	25,7	35	160	E

All information subject to change.

Please contact us on <https://www.aliasis.co.uk/get-in-touch> for further informations