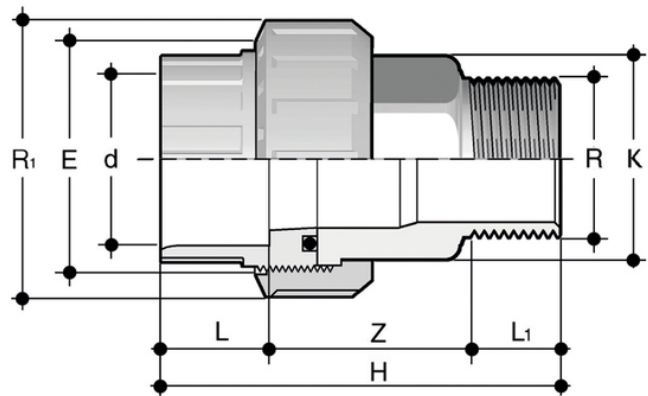
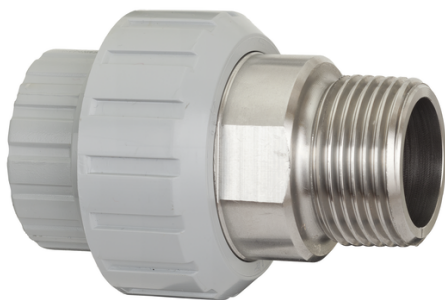


BIRXC_EPDM - Adaptor union

Adaptor union in PVC-C/STAINLESS steel with solvent weld socket d and BSP threaded STAINLESS steel male end R with O-Ring in EPDM or FKM.

Series of fittings designed for conveying fluids under pressure with threaded and cold chemical solvent weld jointing systems (solvent welding) using suitable solvent cement (TemperGLUE WELD-ON) and cleaner-primer.



Reference	d x R	R ₁	PN	E	H	K	L	L ₁	Z	g
BIRXC016038E	16 x 3/8"	3/4"	16	33	58,5	20	14	10,5	34	76
BIRXC020012E	20 x 1/2"	1"	16	41	65	25	16	13,5	35,5	125,5
BIRXC025034E	25 x 3/4"	1"1/4	16	50	72,5	32	19	15	38,5	219
BIRXC032100E	32 x 1"	1"1/2	16	58	80	38	22	17,5	40,5	275
BIRXC040114E	40 x 1"1/4	2"	16	72	91	48	26	19,5	45,5	524
BIRXC050112E	50 x 1"1/2	2"1/4	16	79	101	55	31	19,5	50,5	654
BIRXC063200E	63 x 2"	2"3/4	16	98	122,5	69	38	24	60,5	1124