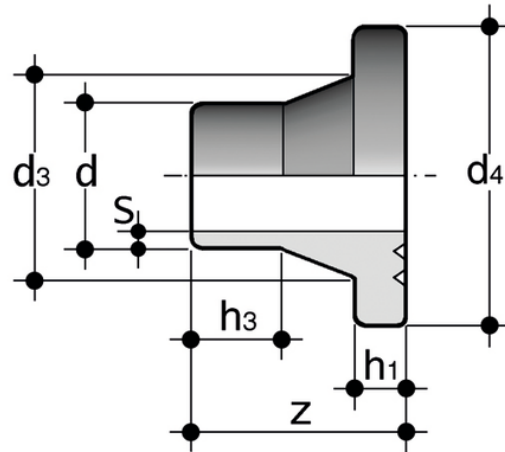
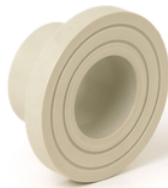


# QBM - Special stub SDR 17,6 - S 8,3

Chamfered stub flange short spigot for butt welding to be used with FE/FK butterfly valves SDR 17,6 - S 8,3.

Series of fittings designed for conveying fluids under pressure with a weld connection system (butt welding).



Reference	Valve d	Pipe d	d <sub>3</sub>	d <sub>4</sub>	h	h <sub>3</sub>	S	g
QBM17FK200	225	200	233	268	24	58	11,4	1760
QBM17FK250	280	250	285	320	25	61	14,2	2170
QBM17FK315	315	315	335	370	25	86	17,9	3600
QBM17FK355	355	355	373	430	30	99	20,1	5400
QBM17FK400	400	400	427	482	33	98	22,7	7120