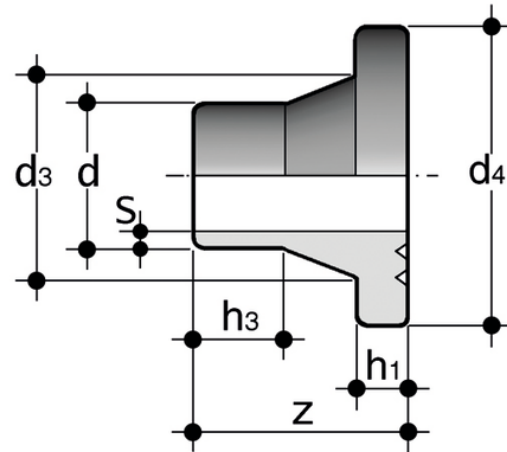
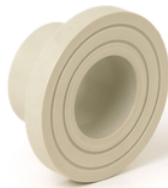


# QBM - Special stub SDR 11 - S 5

## FITTINGS FOR BUTT WELDING - STUBS

Chamfered stub flange short spigot for butt welding to be used with FE/FK butterfly valves SDR 11 - S 5.



Reference	Valve d	Tube d	d <sub>3</sub>	d <sub>4</sub>	h	h <sub>3</sub>	S	g
QBM PP-H special stub flange for FE/FK	160	160	175	212	25	52	14,6	1120
QBM PP-H special stub flange for FE/FK	225	200	232	268	32	50	18,2	2160
QBM11FK225	225	225	235	268	32	65	20,5	2170
QBM11FK250	280	250	285	320	35	51	22,7	2920
QBM11FK280	280	280	291	320	35	45	22,7	3200
QBM11FK315	315	315	335	370	35	86	28,6	5530
QBM11FK355	355	355	373	430	40	90	32,2	7730
QBM11FK400	400	400	427	482	46	95	36,3	10490

All information subject to change.

Please contact us on <https://www.aliaxis.co.uk/get-in-touch> for further informations