

ULFOX.X.X

Ultra Low Flow Sensors

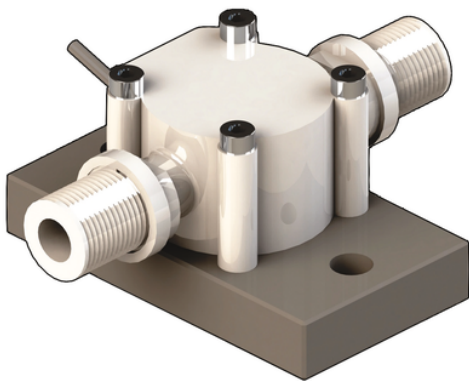
FLS compact Ultra Low Flow sensors ULF have been for use with every kind of aggressive and solid-free liquids. The sensor can be fixed to flexible or rigid pipes via 1/4" GAS threaded process connections. The paddlewheel sensor produces a frequency output proportional to the flow velocity that can be easily transmitted and processed. The ULF sensor offers two different flow ranges starting from 1.5 or 6 l/h (0.0066 or 0.0264 gpm). The construction materials, POM or ECTFE (Halar[®]), provide high strength and chemical resistance.

APPLICATIONS:

- Water treatment
- Chemical industry
- Pharmaceutical industry
- Dosing systems
- Laboratory plants

MAIN FEATURES:

- POM or ECTFE (Halar[®]) wetted parts
- Two flow ranges available: - 1.5 - 100 l/h (0.0066 - 0.44 gpm) - 6 - 250 l/h (0.0264 - 1.1 gpm)
- High chemical resistance
- Easy mounting



Reference	Version	Power supply	Lenght	Main Wetted Materials	Enclosure	Flow Rate Range	Weight (gr.)
ULF01.H.0	Hall	5 - 24 VCC	77 mm	POM \$ FKM	IP65	From 1,5 to 100 l/h*	170
ULF01.H.2	Hall	5 - 24 VCC	77 mm	ECTFE \$ FKM	IP65	From 1,5 to 100 l/h*	200
ULF01.H.3	Hall	5 - 24 VCC	77 mm	ECTFE \$ KALREZ	IP65	From 1,5 to 100 l/h*	200
ULF01.R.0	Reed	None	77 mm	POM \$ FKM	IP65	From 1,5 to 100 l/h*	170
ULF01.R.2	Reed	None	77 mm	ECTFE \$ FKM	IP65	From 1,5 to 100 l/h*	200
ULF01.R.3	Reed	None	77 mm	ECTFE \$ KALREZ	IP65	From 1,5 to 100 l/h*	200

All information subject to change.

Please contact us on <https://www.aliaxis.co.uk/get-in-touch> for further informations



ULFOX.X.X

Reference	Version	Power supply	Lenght	Main Wetted Materials	Enclosure	Flow Rate Range	Weight (gr.)
ULF03.H.0	Hall	5 - 24 VCC	77 mm	POM \$ FKM	IP65	From 1,5 to 100 l/h*	170
ULF03.H.2	Hall	5 - 24 VCC	77 mm	ECTFE \$ FKM	IP65	From 1,5 to 100 l/h*	200
ULF03.H.3	Hall	5 - 24 VCC	77 mm	ECTFE \$ KALREZ	IP65	From 1,5 to 100 l/h*	200
ULF03.R.0	Reed	None	77 mm	POM \$ FKM	IP65	From 1,5 to 100 l/h*	170
ULF03.R.2	Reed	None	77 mm	ECTFE \$ FKM	IP65	From 1,5 to 100 l/h*	200
ULF03.R.3	Reed	None	77 mm	ECTFE \$ KALREZ	IP65	From 1,5 to 100 l/h*	200

All information subject to change.

Please contact us on <https://www.aliaxis.co.uk/get-in-touch> for further informations

