

F3.10.H.XX

Mini Paddlewheel Flow Sensor

Mini Paddlewheel Flow Sensor

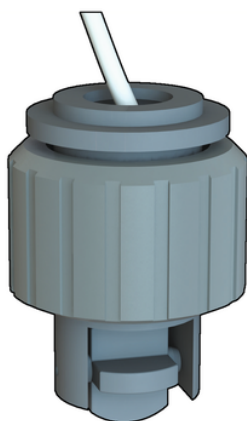
The simple and reliable paddlewheel technology has been moved into this miniflow sensor type FLS F3.10, designed for use with every kind of solid-free liquids. The sensor can measure flow from 0.25 m/s (0.8 ft/s) producing a frequency output signal highly repeatable. A rugged construction and a proven technology guarantee exceptional performances with little or no maintenance required. The very small dimension and a special design make it suitable for installation on FIP standard Tee-fittings from DN15 to DN40 (0.5 to 1.5 in.).

APPLICATIONS:

- Water treatment
- Filtration systems
- Pure water production
- Water monitoring
- Fertigation

MAIN FEATURES:

- IP68 enclosure
- ABS body with EPDM or FPM seal
- ABS 4-blade paddlewheel (no bearings)
- Mono-directional design
- Installation on standard FIP tees
- PVDF body version on request



Reference	Version	Power supply	Lenght	Main Wetted Materials	Enclosure	Flow Rate Range	Weight (gr.)
F3.10.H.01	Hall	5- 24 VCC	41 mm	ABS \$ EPDM	IP68	From 0,15 to 4 m/s*	100
F3.10.H.02	Hall	5- 24 VCC	41 mm	ABS \$ FKM	IP68	From 0,15 to 4 m/s*	100

All information subject to change.

Please contact us on <https://www.aliaxis.co.uk/get-in-touch> for further informations