

VAM RG

Tapping saddle with female threaded gunmetal outlet

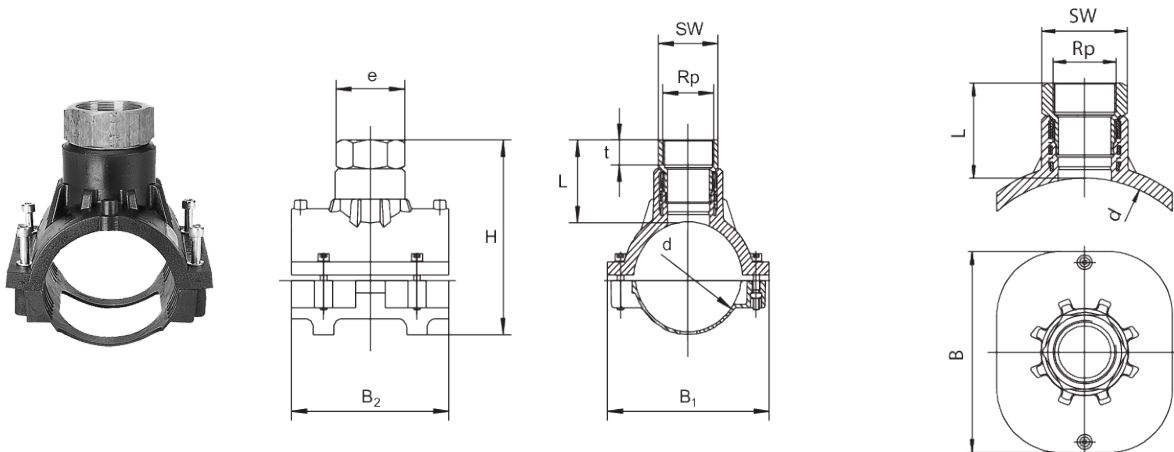
Tapping saddle with female threaded gunmetal outlet VAM RG

- Gas, water
- Working pressure: MOP (gas) 10 bar, PFA (water) 16 bar
- Material: PE 100-RC and gunmetal (female thread)
- Saddle component with clamp
- Safety technology
- Metals in contact with water according to UBA recommendation

Note:

For accommodating commercially available brass valves.

As a complete solution, we recommend our DAV tapping valve.



PE 100-RC SDR 11

Maximum permissible working pressure 16 bar (water) / 10 bar (gas)



	Reference	Diameter	Rp	B1	B2	e	H	L	t	Weight [kg]	BX	Pallet quantity
1	612794	63	1 1/4"	108	118	58	146	75	23	0,730	20	360
1	612743	63	1 1/2"	108	118	64	149	78	23	0,780	20	360
	615213	75	1 1/4"	110	125	58	161	76	23	0,850	15	270
	612798	90	1 1/2"	155	150	81	172	68	27	1,380	16	128
	612778	90	2"	155	150	81	199	95	27	1,570	16	128
	612732	110	1 1/2"	178	180	81	182	70	27	1,520	12	96
	612733	110	2"	178	180	81	205	92	27	1,730	12	96
	612734	125	1 1/2"	190	185	81	207	68	27	1,610	12	96
	612735	125	2"	190	185	81	234	95	27	1,820	12	96
	612728	160	1 1/2"	225	195	81	242	68	27	1,810	8	64
	612729	160	2"	225	195	81	269	95	27	2,040	8	64

VAM RG

Tapping saddle with female threaded gunmetal outlet

Reference	Diameter	Rp	B1	B2	e	H	L	t	Weight [kg]	BX	Pallet quantity
612827	225	2"	255	195	81	322	95	27	2,000	5	40

¹ d 63 can only be fused with pipes of the SDR level 11.

VAM RG

Tapping saddle with female threaded gunmetal outlet

Areas of Application

FRIALEN-Valve Tapping Saddles VAM-RG and VAM-RG-TL are used for acceptance of normal commercial brass valves.

FRIALEN safety fittings can be fused with pipes with SDR levels 11 to 17.6.

DVGW test marks issued: DV-7501AU2257 and DV-7501AU2258.

1) Saddle mouldings d 63 can only be fused with pipes of the SDR level 11.

***as a complete solution we recommend our DAV pressure drilled valve**

Assembly Instructions

VAM-RG

After scraping and cleaning of the pipe which is being fused and cleaning of the internal surface of the FRIALEN-Valve Tapping Saddle the Valve Tapping Saddle is screwed with the bottom section tightly to the HDPE pipe (see Assembly Instructions for "FRIALEN-Safety Fittings for house connections and distribution pipes up to d 225").

VAM-RG-TL

The preparation of the surfaces to be fused is the same as for VAM-RG. The saddle is clamped onto the pipe with the FRIATOP clamping device (see pricelist "Technical Equipment"). Please read the "Assembly and Operating Instructions for FRIATOP clamping unit (Top-Loading)". Fusion takes place by FRIAMAT-fusing.

Eight good reasons for using the FRIALEN-Valve Tapping Saddles:

- Compact construction
- HDPE saddle with exposed heating element for optimal heat transfer
- Gunmetal adapter permanently anchored in the HDPE
- To accept normal commercial brass valves
- Tapping area free of heating wires
- Thread to DIN EN 10226-1, ISO 7-1
- Type VAM-RG-TL can be applied universally to large HDPE pipe diameters d 250-315 (560). This means additional economy due to less material needed and less stock both with suppliers and trade
- Additional barcode for tracing back the underground fitting (Traceability-Coding)