

EFL

Full faced spigot flange

Flange adapter and flange EFL

- Water and gas
- Working pressure: MOP (gas) 10 bar, PFA (water) 16 bar (for UK: MOP 7 bar)
- Material: PE 100-RC and metal insert

Note:

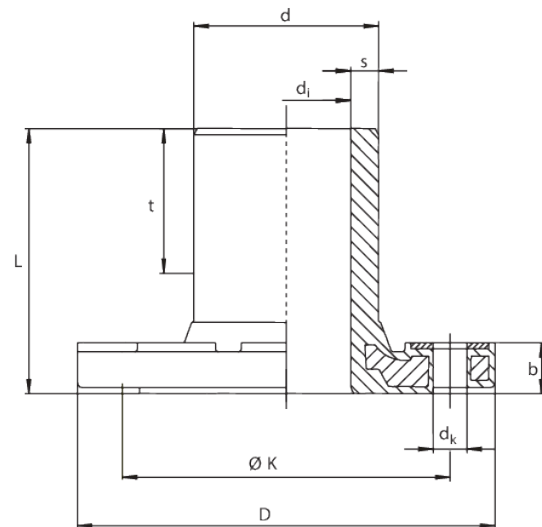
Metal insert in flange in order to prevent cold flow.

Fused side for processing with FRIALEN couplers MB or UB.

When the gasket is selected it shall be suitable for the intended medium and an approval may be required according to national regulations, e.g. for drinking water, gas or H₂. We recommend G-ST seals (Rubber-steel flange gasket).

Note the screw tightening torques after specifying the seal manufacturer or DVS.

Additional washers are required.



PE 100-RC SDR 11

Maximum permissible working pressure 16 bar (water) / 10 bar (gas)



Reference	Diameter	DN	b	D	d _i	d _k	k	L	s	t	Weight [kg]	BX	Pallet quantity
615417	63	50	23	169	51	17	125	105	5,8	53	1,510	5	250
615418	90	80	25	204	72	17	160	130	8,2	71	2,550	10	160
615419	110	100	27	224	87	17	180	150	10	83	3,310	3	96
615605	125	100	30	224	101	17	180	160	11,4	85	3,280	2	64
615421	160	150	29	288	127	21	240	190	14,6	120	5,950	2	36
615927	180	150	31	288	123	21	240	200	16,4	120	6,660	2	36

EFL

Full faced spigot flange

	Reference	Diameter	DN	b	D	di	dk	k	L	s	t	Weight [kg]	BX	Pallet quantity
¹	615607	225	200	31	343	180	21	295	225	20,4	120	9,150	1	27

¹ Flange drill hole for PN 10

EFL

Full faced spigot flange

Areas of Application

The FRIALEN Full Faced Flange EFL is used for the connection between HD-PE and another material or valve up to PN 16. EFL d 63-180 bolt circle for PN 10 and PN 16. EFL d 225/DN 200 is available only with a PN 10 bolt circle.

Assembly Instructions

The Full Faced Flange is installed without pressure. Please refer to the FRIALEN Assembly Instructions regarding preparations for FRIALEN fusion on the flange adaptor (marking insertion depth, removing oxide skin, cleaning etc.).

DIN EN 1092-1 applies to bolt circle diameter, measurements and number of bolts.

All commercial profile and flat gaskets can be used. Please observe the bolt torque specifications by the gasket manufacturer. We recommend profile gaskets type G-St.

Good reasons for the FRIALEN-Full Faced Flanges EFL:

- Flange adaptor and flange are one construction component and make a homogeneous unit
- The cold flowing properties well known with HD-PE are avoided through this constructive configuration
- Solid construction. Integration of the flange prevents tear-off