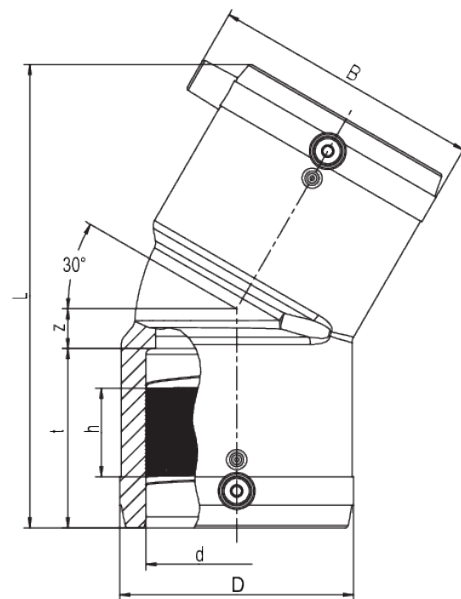


W30 SDR 11

Elbow 30°, SDR 11

Elbow W30 SDR 11

- Gas, water and H₂
- Working pressure: MOP (gas) 10 bar, PFA (water) 16 bar
- Material: PE 100-RC
- Angle 30 degrees
- Safety technology
- DVGW test mark: DV-8606AU2249
- FM Approvals Class: 1613 (d 90 - d 225)



PE 100-RC SDR 11

Maximum permissible working pressure 16 bar (water) / 10 bar (gas)



Reference	Diameter	SDR range	B	D	h	L	t	z	Weight [kg]	BX	Pallet quantity
615272	90	11 - 17,6	123	115	43	224	72	24	0,780	18	144
615273	110	11 - 17,6	157	142	47	252	83	27	1,260	14	108
615274	125	11 - 17,6	162	158	51	270	85	30	1,650	4	72
615340	160	11 - 17,6	198	199	59	350	96	40	3,890	5	40
616261	180	11 - 17,6	234	229	57	390	101	79	5,000	3	24
616262	200	11 - 17,6	256	254	54	412	106	84	6,310	1	18
616263	225	11 - 17,6	282	281	64	456	123	86	8,220	1	18

W30 SDR 11

Elbow 30°, SDR 11

Areas of Application

The FRIALEN-Elbow W30° is used for all changes of direction in HD-PE pipes.

FRIALEN safety fittings can be fused with pipes with SDR levels 11 to 17.6.

Other SDR levels available on request.

Please note the mandatory labels directly on the product.

DVGW test mark issued: DV-8606AU2249

Assembly Instructions

The fusion of the pipe ends with the FRIALEN Elbows W30° takes place by FRIALEN-fusing – leakproof and longitudinally strong.

The pipe ends are prepared according to the general installation instructions (see "Assembly Instructions" for "FRIALEN Safety Fittings for house connections and distribution pipes up to d 225"). This involves removing the oxide skin and cleaning the pipe ends.

Good reasons for using the FRIALEN Elbows W30°:

- Large coupler depth for ease of pipe guiding (no holding clamps required)
- Extra wide fusion zones
- Maximum stability through great wall thickness
- Cold zones at the front side and in the middle of the coupler
- Exposed heating coil for direct heat transmission to the pipe
- Small annular gap for build-up of optimum joining pressure in the fusion zone
- Contacts safe to touch
- Fusion indicator for visual fusion control
- Durable batch marking
- Individually wrapped for dirt protection
- Additional barcode for tracing back the fitting (Traceability-Coding)