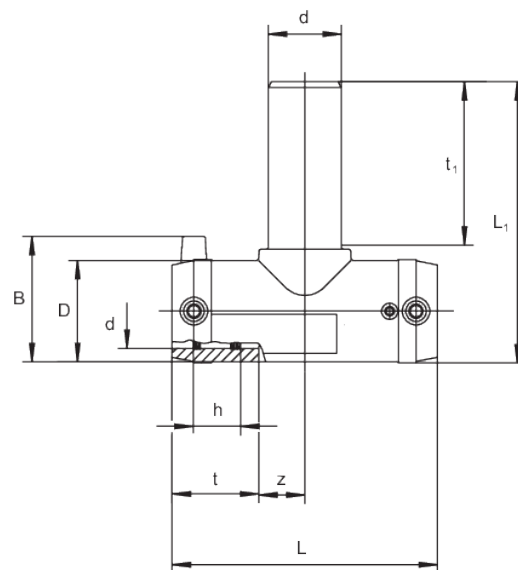


# TA SDR 11

## Equal tee with spigot outlet, SDR 11

Equal tee TA SDR 11 with spigot outlet

- Gas, water and H<sub>2</sub>
- Working pressure: MOP (gas) 10 bar, PFA (water) 16 bar
- Material: PE 100-RC
- Spigot
- Safety technology
- DVGW test mark: DV-8601AU2248 and DV-8606AU2249



With extra long outlet spigot



| Reference | Diameter | SDR range | B  | D  | h  | L   | L1  | t  | t <sub>1</sub> | z  | Weight [kg] | BX  | Pallet quantity |
|-----------|----------|-----------|----|----|----|-----|-----|----|----------------|----|-------------|-----|-----------------|
| 616685    | 20/20    | 11        | 42 | 29 | 17 | 77  | 95  | 31 | 45             | 8  | 0,040       | 200 | 3200            |
| 616338    | 25/25    | 11        | 54 | 36 | 19 | 108 | 110 | 41 | 66             | 13 | 0,080       | 50  | 900             |
| 615719    | 32/32    | 11        | 61 | 44 | 22 | 116 | 131 | 39 | 80             | 19 | 0,120       | 35  | 630             |
| 615720    | 40/40    | 11        | 70 | 53 | 25 | 146 | 151 | 43 | 88             | 30 | 0,210       | 20  | 360             |
| 615721    | 50/50    | 11 - 17,6 | 80 | 67 | 29 | 175 | 186 | 49 | 110            | 38 | 0,360       | 10  | 180             |
| 615722    | 63/63    | 11 - 17,6 | 94 | 81 | 33 | 197 | 203 | 56 | 125            | 42 | 0,530       | 10  | 180             |

With standard outlet spigots



# TA SDR 11

## Equal tee with spigot outlet, SDR 11

| Reference | Diameter | SDR range | B   | D   | h    | L   | L1  | t   | t <sub>1</sub> | z   | Weight [kg] | BX | Pallet quantity |
|-----------|----------|-----------|-----|-----|------|-----|-----|-----|----------------|-----|-------------|----|-----------------|
| 616677    | 90/90    | 11 - 17,6 | 126 | 116 | 43   | 280 | 219 | 79  | 79             | 61  | 1,250       | 12 | 96              |
| 616680    | 110/110  | 11 - 17,6 | 148 | 141 | 48   | 310 | 247 | 82  | 82             | 73  | 1,950       | 6  | 48              |
| 616684    | 160/160  | 11 - 17,6 | 205 | 203 | 45   | 390 | 326 | 98  | 98             | 97  | 4,950       | 3  | 24              |
| 617175    | 180/180  | 11 - 17,6 | 228 | 223 | 49,9 | 495 | 389 | 105 | 87             | 143 | 8,120       | 2  | 16              |
| 617179    | 200/200  | 11 - 17,6 | 250 | 247 | 50,3 | 540 | 425 | 112 | 112            | 158 | 10,720      | 1  | 8               |
| 617183    | 225/225  | 11 - 17,6 | 281 | 278 | 61,2 | 590 | 469 | 120 | 120            | 175 | 15,050      | 1  | 8               |

# TA SDR 11

## Equal tee with spigot outlet, SDR 11

### Areas of Application

The FRIALEN-T pieces TA are used for pipe outlets of HD-PE pipelines.

FRIALEN safety fittings can be fused with SDR11 - SDR17.6 pipes.

Minimum wall thickness  $s_{\text{minimum}} \geq 3 \text{ mm}$ .

Other levels of SDR can be processed on request.

Please note the mandatory labels directly on the product.

DVGW test mark issued: DV-8601AU2248 and DV-8606AU2249.

Dimension B = Diameter D with contact pin

### Assembly Instructions

The fusion of the pipe ends with the FRIALEN-TA takes place by FRIALEN-fusing – leakproof and longitudinally strong.

The pipe ends are prepared (removing the oxide layer/cleaning) according to the general installation instructions (see "Assembly Instructions" for "FRIALEN-Safety Fittings for house connections and distribution pipes up to d 225").

### Good reasons for using the FRIALEN-TA:

- **Optimised size and flow conditions** for branches
- **Spigot outlet** for maximum flexibility in pipework construction
- **Large insertion depths** - no retaining clamps necessary
- **Open wire design** for a secure and high-quality connection
- **Long outlets** - double length allows for double fusion on pipe diameters up to 63 mm
- **Maximum stability** thanks to large wall thicknesses
- **Traceability coding** Additional barcode for component traceability