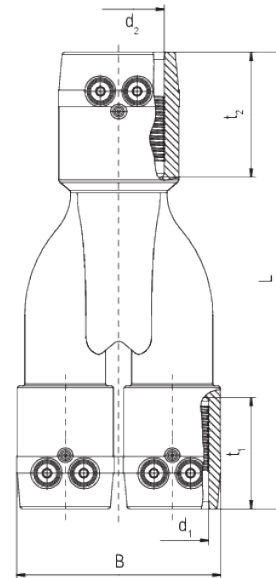


Y SDR 11

Y-tee, SDR 11

Y-tee Y SDR 11

- Gas and water
- Working pressure: MOP (gas) 10 bar, PFA (water) 16 bar
- Material: PE 100-RC
- Safety technology
- DVGW test mark: DV-8601AU2248



PE 100-RC SDR 11

Maximum permissible working pressure 16 bar (water) / 10 bar (gas)



Reference	Diameter	SDR range	B	L	t ₁	t ₂	Weight [kg]	BX	Pallet quantity
640034	32-32-40	11	92	205	50	56	0,230	28	504
640036	40-40-50	11	115	219	56	60	0,360	18	324

Y SDR 11

Y-tee, SDR 11

Area of application

The FRIALEN Y-pieces are used for the connection of FRIALEN borehole heat exchanger pipes to be able to operate two or more circuits via a shut-off element or to quickly and efficiently create a direct connection to the heat pump. FRIALEN Y-pieces have a smooth, hydraulically optimised internal contour for optimal flow conditions.

The FRIALEN Y- and YS-pieces can be fused with pipes made of PE 100, PE 100 Plus Geo CR or PE 100-RC of the SDR levels 11 to 17.6.

SKZ symbol A 500 (SKZ HR 3.26)

Assembly instructions

The connection of the pipes with FRIALEN Y-pieces made by FRIALEN electrofusion is leak-proof and longitudinally strong.

The PE spigot end of the YS-pieces as well as the borehole heat exchangers- and connection pipes, made of PE 100 or PE 100 plus Geo CR respectively PE 100-RC, get prepared (removing oxide layer/cleaning), according to the general assembly instructions (see "Assembly Instructions" for "FRIALEN-Safety Fittings for house connections and distribution pipes up to d 225") and can be used for example with a FRIALEN elbow 90°.

Many good reasons for using the FRIALEN Y-tee:

- 8 mm coupler extension of the Y-tee for more safety when installing coiled pipe because of long guiding- and holding zones
- less space required thanks to compact design
- reduces installation time thanks to integrated fusion couplers giving simultaneously processing safety
- leak-proof, longitudinally strong connection
- exposed, fixed heating coil for direct heat transfer to the pipe
- maximum stability through great wall thickness
- fusion indicators for visual fusion control
- barcode for fully automatic fusion with HDPE pipes from SDR stages 11 to 17.6, taking into consideration the ambient temperature (temperature compensation)
- flexible use enabled due the variation of either Y-tee (3 x coupler) or Y-tee with spigot outlet (2 x coupler, 1 x spigot end)
- additional barcode for tracing back the component part (Traceability-Coding)
- durable batch marking
- individual foil wrap to prevent dirtying at building site
- touch proof electric contacts
- small annular gap for build-up of optimum joining pressure in the fusion zone