

# SA UNI

## Universal spigot saddle, SDR 11

Universal spigot saddle SA UNI SDR 11

Gas, water and H<sub>2</sub>

- Maximum pressure: Gas 10 bar, Water 16 bar
- Material: PE 100-RC
- Universal clamping technique (balanced loading):
  - Safe clamping with UNITOP
  - Ideal distribution of force application
  - Perfect adaptation to pipe diameter
- Pressure test of the fusing before tapping possible
- Tapping under pressure possible
- Safety technology

### Note:

When processing SA UNI with outlet spigot 90 - 160, the clamping device UNITOP (Order No. 613385) is required.

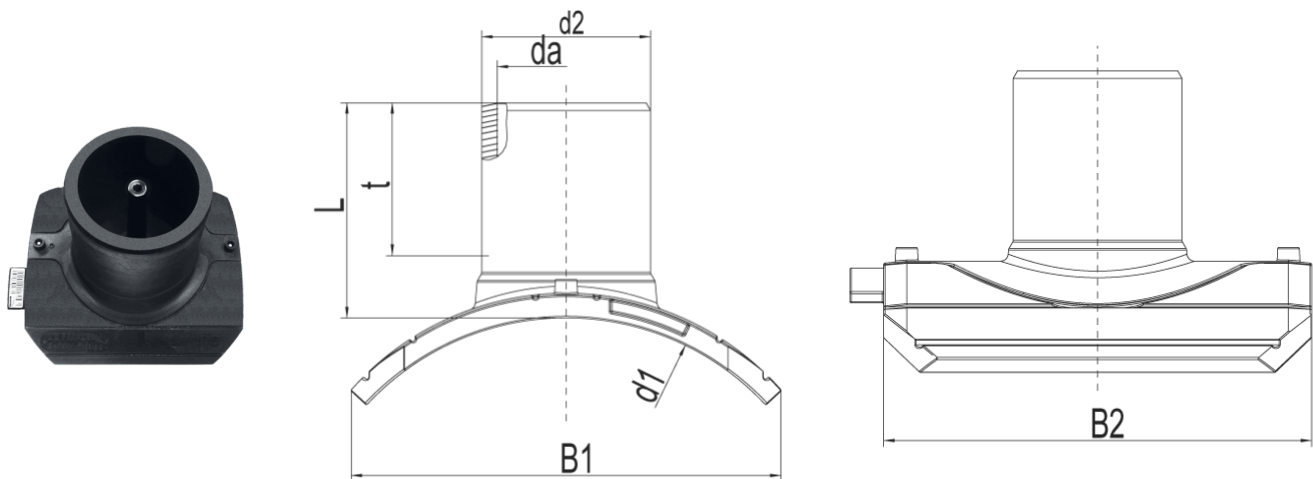
For the outlet spigots 225 / 250, UNITOP 250 (Order No. 613387) is required.

For pressure-free tapping, we recommend our FWAB drilling device.

Pressure test of the fusing before tapping with pressure test adapter FWDPA SA (Order No. 613596).

Also suitable for special dimensions for Close-Fit-Liners.

If you have any questions about this or about tapping under pressure, please contact our Hotline: Tel. +49 621 486-2325.



PE 100-RC SDR 11

Maximum permissible working pressure 16 bar (water) / 10 bar (gas)



Reference	d <sub>1</sub>	d <sub>2</sub>	SDR range	B1	B2	D1	L	t	Drilling Ø da	Weight [kg]	BX	Pallet quantity
616553	250-280	90	11 - 26	260	279	250-280	130	79	65	1,420	5	40
616554	250-280	110	11 - 26	260	279	250-280	140	82	84	1,590	5	40

# SA UNI

## Universal spigot saddle, SDR 11

Reference	d <sub>1</sub>	d <sub>2</sub>	SDR range	B1	B2	D1	L	t	Drilling Ø da	Weight [kg]	BX	Pallet quantity
616555	250-280	125	11 - 26	260	279	250-280	146	87	95	1,760	5	40
616556	250-280	160	11 - 26	260	279	250-280	158	98	123	2,210	5	40
616557	315-400	90	11 - 26	280	279	315-400	130	79	65	1,430	5	40
616558	315-400	110	11 - 26	280	279	315-400	140	82	84	1,600	5	40
616559	315-400	125	11 - 26	280	279	315-400	146	87	95	1,750	5	40
616560	315-400	160	11 - 26	280	279	315-400	158	98	123	2,220	5	40
616561	450-900	90	11 - 26	307	279	450-900	130	79	65	1,390	5	40
616562	450-900	110	11 - 26	307	279	450-900	140	82	84	1,550	5	40
616563	450-900	125	11 - 26	307	279	450-900	146	87	95	1,710	5	40
616564	450-900	160	11 - 26	307	279	450-900	158	98	123	2,160	5	40
617224	315-355	225	11 - 26	363	438	315-355	226	164	172	7,300	5	40
617225	315-355	250	11 - 26	363	438	315-355	226	164	187	7,900	5	40
617226	400-450	225	11 - 26	403	438	400-450	226	164	172	7,100	5	40
617227	400-450	250	11 - 26	403	438	400-450	226	164	187	7,900	5	40
617228	500-630	225	11 - 26	429	438	500-630	226	164	172	7,000	5	40
617229	500-630	250	11 - 26	429	438	500-630	226	164	187	7,700	5	40
617230	710-900	225	11 - 26	444	438	710-900	226	164	172	6,900	5	40
617231	710-900	250	11 - 26	444	438	710-900	226	164	187	7,600	5	40
617232	1000-1200	225	11 - 26	450	438	1000-1200	226	164	172	6,800	5	40
617233	1000-1200	250	11 - 26	450	438	1000-1200	226	164	187	7,500	5	40

# SA UNI

## Universal spigot saddle, SDR 11

### Areas of Application

Instead of cost-intensively integrating a T-piece, a branch or vent can be very comfortably created using the FRIALEN Saddle with outlet spigot Universal SA UNI. The spigot outlet can be fused with FRIALEN couplers MB or UB.

FRIALEN safety fittings can be fused to pipes SDR 11 - SDR 26. Other SDR-stages on request. Please observe the marking directly at the product, which is mandatory.

### Assembly Instructions

The saddle SA UNI is clamped onto the pipe with the UNITOP clamping device (Order-No. 613385, see FRIATOOLS product range) or for the saddle SA UNI 225/250 with the UNITOP 250 clamping device (Order-No. 613387). The clamping device UNITOP or UNITOP 250 is an universal tool for all SA UNI dimensions. Please read the assembly and operating instructions for the clamping devices UNITOP and UNITOP 250.

The fusion of the HD-PE distribution pipes and the house connections with FRIALEN Saddle with outlet spigot Universal SA UNI takes place by FRIALEN-fusing – leakproof and longitudinally strong.

The saddle and the outlet spigot have to be prepared according to the general installation instructions (see assembly instruction FRIALEN safety fittings). This involves removing the oxide skin and cleaning the pipe covered by the saddle.

For tapping of pipes without pressure please use the FRIATOOLS tapping equipment FWAB. Please refer the assembly and operating instructions of the drilling device FWAB. The fusion and tapping of pipes under pressure is possible with special tapping equipment. Please contact our applications engineers.

### Good reasons for using the FRIALEN Universal spigot saddle SA UNI:

- Cost alternative to T-Pieces
- Cross-dimensional processing of up to **three** pipe diameters
- Clear and safe indication for the correct clamping (preset torque wrench)
- Burr-free and almost flush tapping for maximum hydraulic performance
- Tapping under pressure with shut-off element without interrupting operations is possible
- Before tapping the pipe, a leak test can take place with the pressure testing device FWDPA SA
- Simple and safe installation with UNITOP and UNITOP 250 (Balanced-Loading)
- Fusion indicators for visual fusion control