

RSV

Repair and reinforcement saddle, SDR11

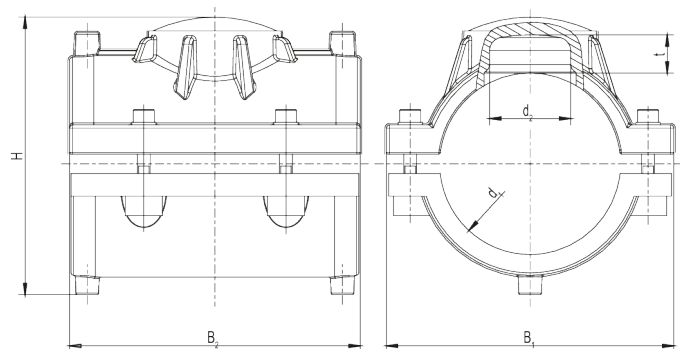
Repair and reinforcement saddle RSV SDR 11

- Gas, water and H₂
- Working pressure: MOP (gas) 10 bar, PFA (water) 16 bar
- Material: PE 100-RC
- 2 combined saddle components
- Safety technology

Note:

Only apply to minor pipe damage.

The damage must be located within the repair area and not in the fusion zone.



PE 100-RC SDR 11

Maximum permissible working pressure 16 bar (water) / 10 bar (gas)



Reference	d ₁	d ₂	B1	B2	D1	H	t	Weight [kg]	BX	Pallet quantity
615164	90	50	155	150	90	148	21	0,930	24	192
615165	110	50	178	180	110	170	21	1,160	16	128
615166	125	50	190	185	125	183	21	1,370	15	120
615168	160	50	225	195	160	218	21	1,680	10	80
615169	180	50	240	195	180	238	21	1,810	6	48
615170	200	50	250	195	200	258	21	1,860	5	40
615171	225	50	255	195	225	283	21	1,910	5	40

Repair and reinforcement saddle, SDR11

Areas of Application

The FRIALEN Repair and Reinforcing Saddles are used for the repair of minor pipe damages.

FRIALEN safety fittings are fusion-capable with PE pipes according to the specifications of the SDR pipe series on the barcode sticker/datasheet of the respective fitting. The minimum wall thicknesses specified in the standards EN1555-1, EN 12201-1 and ISO 4437 must be observed.

Assembly Instructions

The fusion of the HD-PE pipe with the FRIALEN Repair and Reinforcing Saddle takes place by FRIALEN fusing – leakproof and longitudinally strong. In order to avoid discharge of media, the leak has to be sealed with a separate plug ($\leq d2$).

Both saddles have to be prepared according to the general assembly requirements (see assembly instructions: „FRIALEN safety fittings for sustainable pipes for gas, water networks and industrial systems made of PE“) (remove/clean oxide layer from pipe).

Good reasons for using the FRIALEN VVS:

- Compact construction
- Open wire technology for direct heat transmission
- Fusion area free of heating wires
- Preassembled unit without loose parts
- Wide fusion zone
- Additional barcode for tracing back the fitting (Traceability-Coding)