

RW

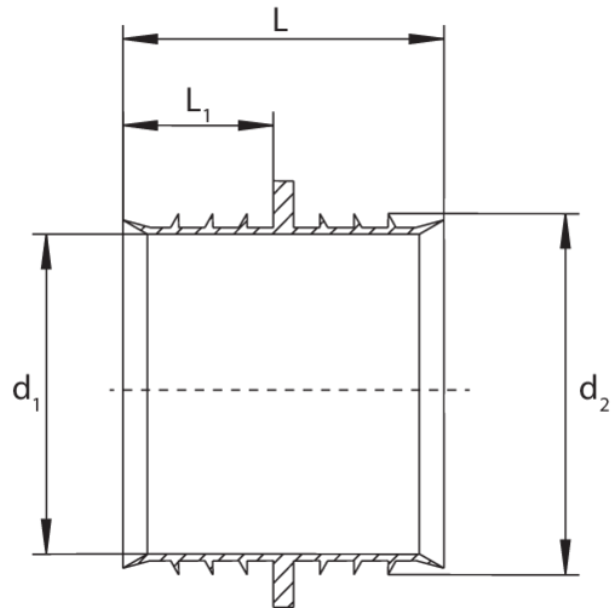
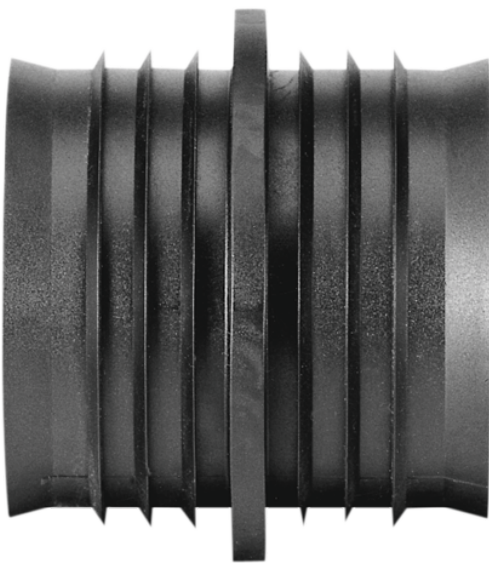
Repair sleeve

Repair sleeve RW

- For the repair of water-house connection pipes in a pressure-free condition.
- Prevents water from entering the fusion zone of the FRIALEN couplers MB or UB.

Note:

Dimension d means: Repair sleeve for pipe d xy.



Only suitable for pipe SDR 11



Reference	Diameter	d ₁	d ₂	D1	L	L1	Weight [kg]	BX	Pallet quantity
615127	32	21	27	21	35	16	0,010	50	4500
615128	40	28	34	28	35	16	0,010	50	2500
615129	50	36	42	36	35	16	0,010	50	2500
615130	63	46	53	46	47	22	0,020	40	2000

RW

Repair sleeve

Areas of Application

The FRIALEN-Repair Sleeve is used for the repair of house connection water pipes in the depressurised state. The Repair Sleeve prevents the ingress of water into the fused area of the FRIALEN-Couplers MB or UB.

Dimension d means: Repair sleeve for pipe d xy

Assembly Instructions

The pipe is parted and the damaged piece is taken out. A new piece of pipe is made to fit. Two FRIALEN-Couplers are pushed onto this. The Repair Sleeves are pushed into the existing pieces of pipeline and the new made to measure piece of pipe positioned between them. The couplers are then fitted halfway over the sleeves and fused.

The Repair Sleeve RW is only suitable for pipe SDR 11.

One good reason for using the FRIALEN-Repair Sleeves RW:

- For repair or connection work on domestic water connection pipes the sleeve prevents residual water from running back into the fusion zone.