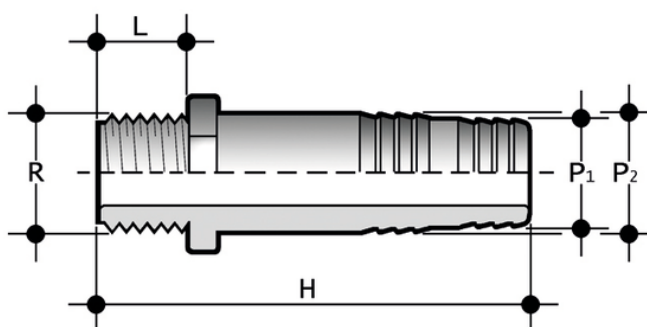


# AFV - Porte-tuyaux

Connecteur de tuyau à extrémité fileté mâle.

Série de raccords destinés au transport de fluides sous pression avec connexion fileté.



Référence	product.detail.attribute.[["R x P[5:1] x P[5:2]"]
AFV014012014	1\4" x 12 x 14",["PN","16"],["H","56"],["L","11"],["g","7"]]
AFV038016018	3\8" x 16 x 18",["PN","16"],["H","58"],["L","11,4"],["g","14"]]
AFV012020022	1\2" x 20 x 22",["PN","16"],["H","66"],["L","15"],["g","19"]]
AFV034025027	3\4" x 25 x 27",["PN","16"],["H","81"],["L","16,3"],["g","30"]]
AFV100030032	1" x 30 x 32",["PN","16"],["H","97"],["L","19,1"],["g","45"]]
AFV114040042	1\1\4" x 40 x 42",["PN","16"],["H","104"],["L","21,4"],["g","85"]]
AFV112050052	1\1\2" x 50 x 52",["PN","16"],["H","111"],["L","21,4"],["g","120"]]
AFV200060064	2" x 60 x 64",["PN","16"],["H","123"],["L","25,7"],["g","180"]]