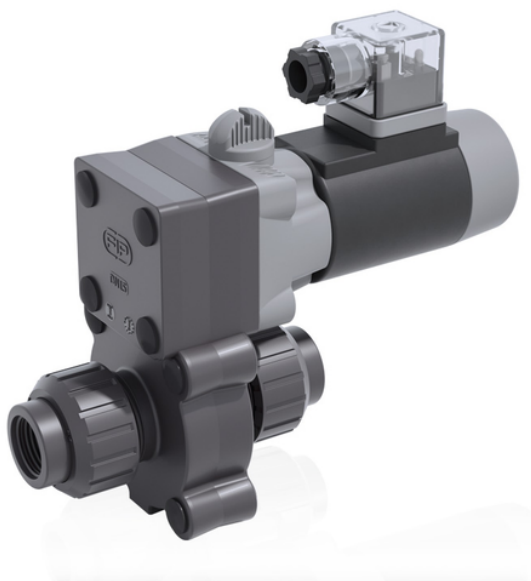


# S22FV - 24V DC - valvola a solenoide a due vie a smontaggio radiale

Valvola a solenoide a 2 vie, con attacchi femmina filettati BSP a bocchettone.

Funzione: Normalmente Chiusa. Tensione di alimentazione: 24V DC



## EPDM

| Codice         | d    | DN | A  | B   | C   | H   | H    | L    | Z  | E  | M  | g    |
|----------------|------|----|----|-----|-----|-----|------|------|----|----|----|------|
| S22FV0838E024C | 3/8" | 8  | 34 | 115 | 130 | 97  | 48,5 | 11,5 | 74 | 54 | 67 | 1000 |
| S22FV0812E024C | 1/2" | 8  | 34 | 115 | 130 | 105 | 52,5 | 15   | 75 | 54 | 67 | 1000 |
| S22FV1038E024C | 3/8" | 10 | 34 | 115 | 130 | 97  | 48,5 | 11,5 | 74 | 54 | 67 | 1000 |
| S22FV1012E024C | 1/2" | 10 | 34 | 115 | 130 | 105 | 52,5 | 15   | 75 | 54 | 67 | 1000 |
| S22FV1538E024C | 3/8" | 15 | 34 | 115 | 130 | 97  | 48,5 | 11,5 | 74 | 54 | 67 | 1000 |
| S22FV1512E024C | 1/2" | 15 | 34 | 115 | 130 | 105 | 52,5 | 15   | 75 | 54 | 67 | 1000 |

## FKM

| Codice         | d    | DN | A  | B   | C   | H   | H    | L    | Z  | E  | M  | g    |
|----------------|------|----|----|-----|-----|-----|------|------|----|----|----|------|
| S22FV0838F024C | 3/8" | 8  | 34 | 115 | 130 | 97  | 48,5 | 11,5 | 74 | 54 | 67 | 1000 |
| S22FV0812F024C | 1/2" | 8  | 34 | 115 | 130 | 105 | 52,5 | 15   | 75 | 54 | 67 | 1000 |
| S22FV1038F024C | 3/8" | 10 | 34 | 115 | 130 | 97  | 48,5 | 11,5 | 74 | 54 | 67 | 1000 |
| S22FV1012F024C | 1/2" | 10 | 34 | 115 | 130 | 105 | 52,5 | 15   | 75 | 54 | 67 | 1000 |
| S22FV1538F024C | 3/8" | 15 | 34 | 115 | 130 | 97  | 48,5 | 11,5 | 74 | 54 | 67 | 1000 |
| S22FV1512F024C | 1/2" | 15 | 34 | 115 | 130 | 105 | 52,5 | 15   | 75 | 54 | 67 | 1000 |