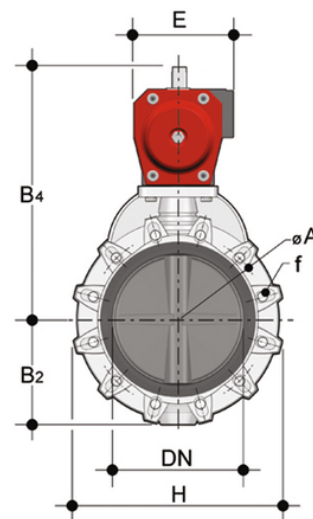
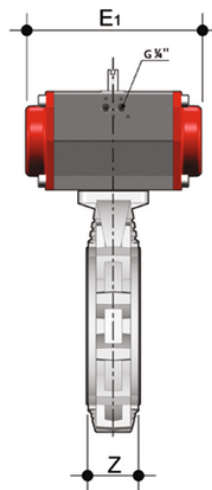
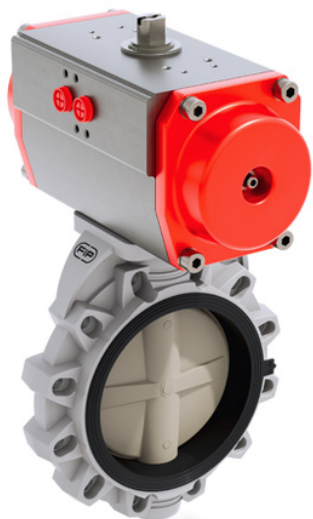


# FKOM/CP NC - Valvola a farfalla a comando pneumatico DN 250:300

Valvola a farfalla con attuatore pneumatico, funzione Normalmente Chiusa.



## EPDM

Codice	d	DN	PN	B <sub>2</sub>	H	Z	ΦA	f	U	B <sub>4</sub>	E	E <sub>1</sub>	g
FKOMNC280E	250/280	*250	10	210	405	114	350	22	12	538	220	575	64800
FKOMNC315E	315	*300	8	245	475	114	400	22	12	595	220	575	71700
FKOAMNC810E	10"	**250	10	210	405	114	362	25,4	12	538	220	575	64800
FKOAMNC812E	12"	**300	8	245	475	114	432	25,4	12	595	220	575	71700

## FKM

Codice	d	DN	PN	B <sub>2</sub>	H	Z	ΦA	f	U	B <sub>4</sub>	E	E <sub>1</sub>	g
FKOMNC280F	250/280	*250	10	210	405	114	350	22	12	538	220	575	64800
FKOMNC315F	315	*300	8	245	475	114	400	22	12	595	220	575	71700
FKOAMNC810F	10"	**250	10	210	405	114	362	25,4	12	538	220	575	64800
FKOAMNC812F	12"	**300	8	245	475	114	432	25,4	12	595	220	575	71700