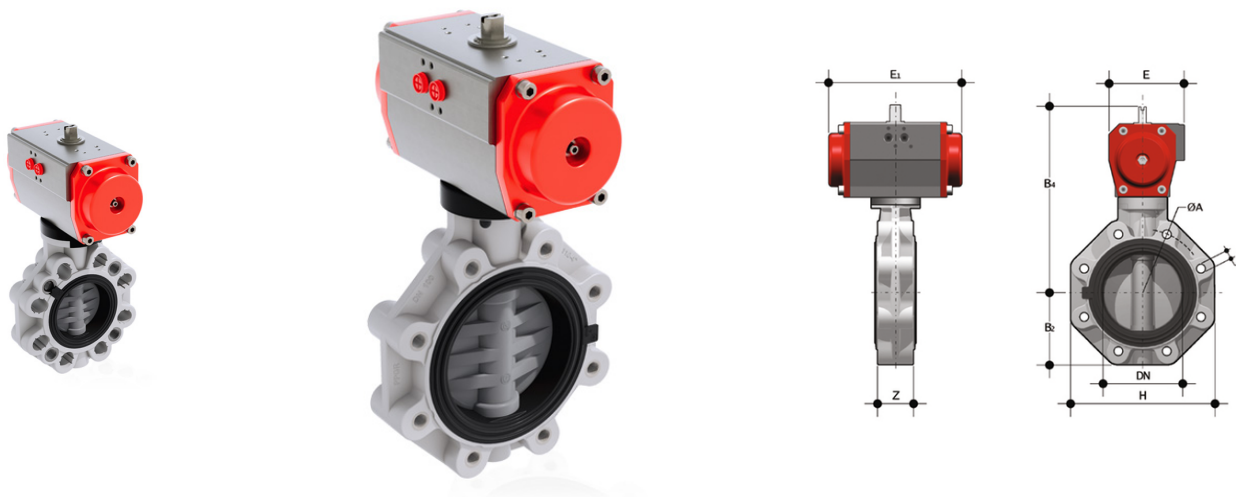


FKOC/CP DA LUG ANSI - Valvola a farfalla a comando pneumatico DN 80:200

Valvola a farfalla versione LUG ANSI 150 con attuatore pneumatico. Funzione Doppio Effetto.



EPDM

| Codice | d | DN | PN | B ₂ | H | Z | ΦA | f | U | B ₄ | E | E ₁ | g |
|--------------|----|-----|----|----------------|-----|----|-------|------|----|----------------|-----|----------------|-------|
| FKOALCDA300E | 3" | 80 | 10 | 93 | 185 | 49 | 152,4 | 5/8" | 12 | 253 | 94 | 210 | 5291 |
| FKOALCDA400E | 4" | 100 | 10 | 107 | 211 | 56 | 190,5 | 5/8" | 8 | 110 | 104 | 228 | 6972 |
| FKOALCDA500E | 5" | 125 | 10 | 120 | 240 | 64 | 215,9 | 3/4" | 8 | 297 | 104 | 228 | 8711 |
| FKOALCDA600E | 6" | 150 | 10 | 134 | 268 | 70 | 241,3 | 3/4" | 8 | 325 | 120 | 280 | 11126 |
| FKOALCDA800E | 8" | 200 | 10 | 161 | 323 | 71 | 298,4 | 3/4" | 8 | 399 | 134 | 310 | 17461 |

FKM

| Codice | d | DN | PN | B ₂ | H | Z | ΦA | f | U | B ₄ | E | E ₁ | g |
|--------------|----|-----|----|----------------|-----|----|-------|------|----|----------------|-----|----------------|-------|
| FKOALCDA300F | 3" | 80 | 10 | 93 | 185 | 49 | 152,4 | 5/8" | 12 | 253 | 94 | 210 | 5291 |
| FKOALCDA400F | 4" | 100 | 10 | 107 | 211 | 56 | 190,5 | 5/8" | 8 | 110 | 104 | 228 | 6972 |
| FKOALCDA500F | 5" | 125 | 10 | 120 | 240 | 64 | 215,9 | 3/4" | 8 | 297 | 104 | 228 | 8711 |
| FKOALCDA600F | 6" | 150 | 10 | 134 | 268 | 70 | 241,3 | 3/4" | 8 | 325 | 120 | 280 | 11126 |
| FKOALCDA800F | 8" | 200 | 10 | 161 | 323 | 71 | 298,4 | 3/4" | 8 | 399 | 134 | 310 | 17461 |