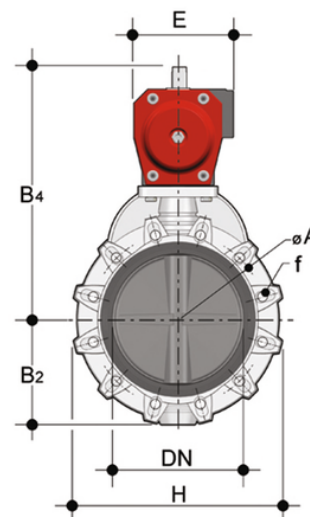
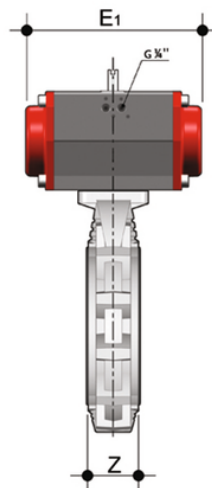
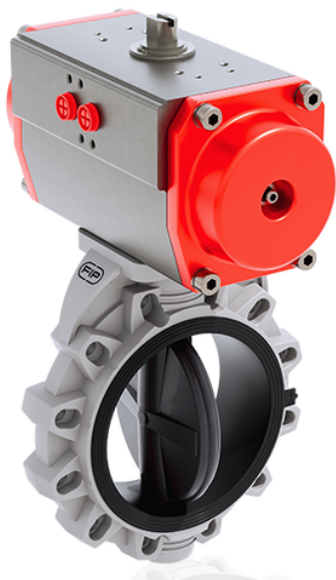


FKOV/CP NO - Valvola a farfalla a comando pneumatico DN 250:300

Valvola a farfalla con attuatore pneumatico, funzione Normalmente Aperta.



EPDM

Codice	d	DN	PN	B ₂	H	Z	ΦA	f	U	B ₄	E	E ₁	g
FKOVNO280E	250/280	***250	10	210	405	114	350	22	12	538	220	575	65000
FKOVNO315E	315	***300	8	245	475	114	400	22	12	595	220	575	72000
FKOAVNO810E	10"	****250	10	210	405	114	362	25,4	12	538	220	575	65000
FKOAVNO812E	12"	****300	8	245	475	114	432	25,4	12	595	220	575	72000

FKM

Codice	d	DN	PN	B ₂	H	Z	ΦA	f	U	B ₄	E	E ₁	g
FKOVNO280F	250/280	***250	10	210	405	114	350	22	12	538	220	575	65000
FKOVNO315F	315	***300	8	245	475	114	400	22	12	595	220	575	72000
FKOAVNO810F	10"	****250	10	210	405	114	362	25,4	12	538	220	575	65000
FKOAVNO812F	12"	****300	8	245	475	114	432	25,4	12	595	220	575	72000